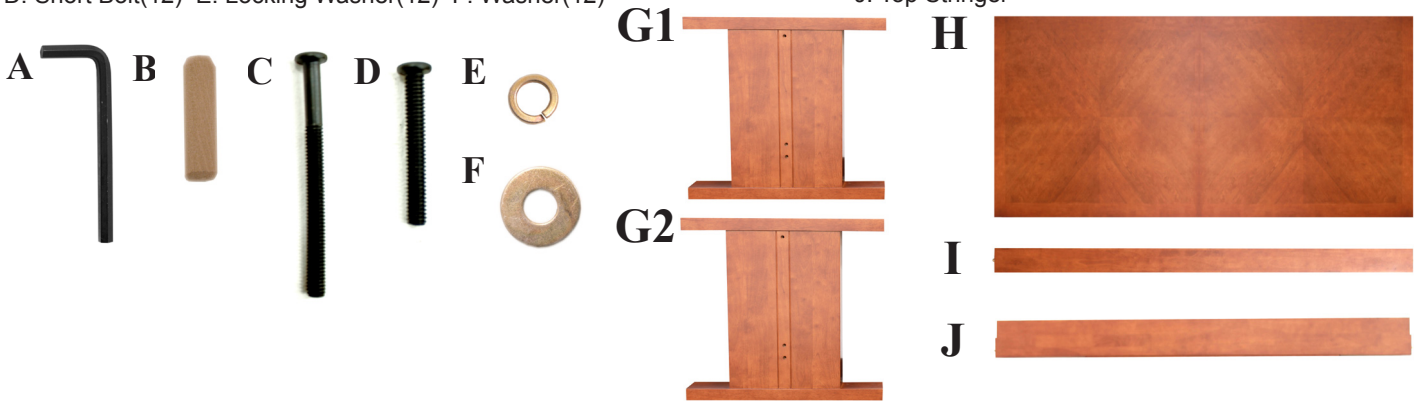


BCTRC9648 • INSTRUCTIONS

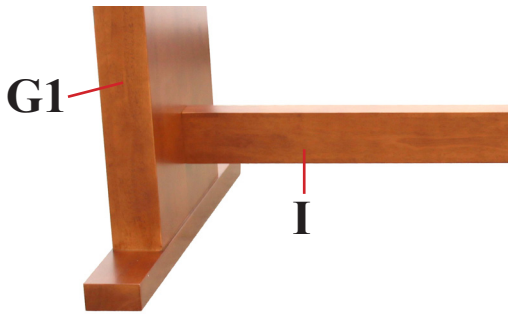
You will need 2 person(s) for this assembly.

Hardware: A: Assembly Key B: Dowel Rod(4) C: Long Bolt(6)
D: Short Bolt(12) E: Locking Washer(12) F: Washer(12)

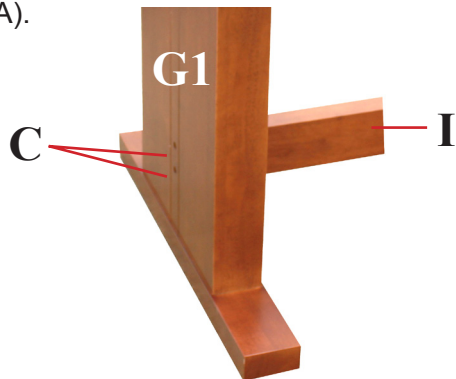
Parts: G: Leg(2) H: Table Top I: Bottom Stringer
J: Top Stringer



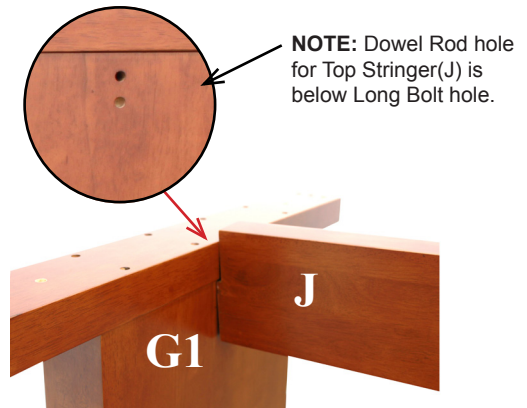
STEP 1a : Attach Bottom Stringer(I) to Leg(G1) by inserting Rod into corresponding hole.



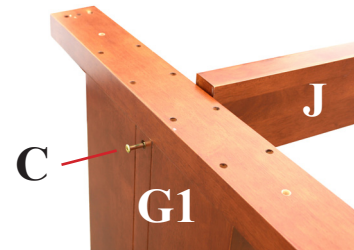
STEP 1b : Secure Bottom Stringer(I) to Leg(G1) with 2 Long Bolts(C) using Assembly Key(A).



STEP 2a : Attach Top Stringer(J) by inserting Rod(B) into corresponding hole on same Leg(G1) as Bottom Stringer(I).



STEP 2b : Secure Top Stringer(J) to Leg(G1) with Long Bolt(C) using Assembly Key(A).



STEP 2c : Repeat Step1a-2b for other Leg(G2).

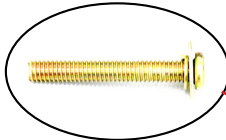
IMPORTANT NOTICE:

- Place all wooden parts on a clean and smooth surface such as a rug or carpet to avoid the parts from being scratched.
- Check to be sure that you have all parts and hardware.
- Remove all wrapping materials, including staples & packing straps before you start to assemble.
- Do not tighten all screws/bolts until completely assembled.
- Keep all hardware parts out of reach of children.

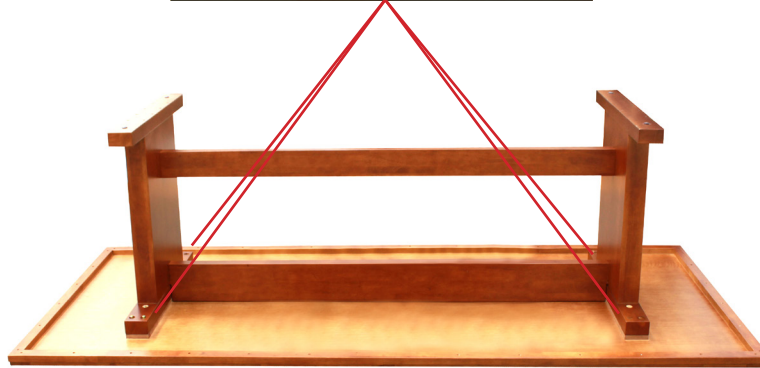
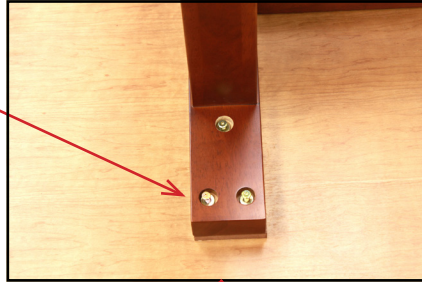
BCTRC9648 • INSTRUCTIONS

You will need 2 person(s) for this assembly.

STEP 3 : Finish by attaching Table Top(H) to Legs(G1,G2) with 3 Short Bolts(D), 3 Washers(F) and 3 Locking Washers(E) for each Leg Corner.



NOTE: Short Bolt(D)
with Washer(F) and
Locking Washer(E)



IMPORTANT NOTICE:

- Place all wooden parts on a clean and smooth surface such as a rug or carpet to avoid the parts from being scratched.
- Check to be sure that you have all parts and hardware.
- Remove all wrapping materials, including staples & packing straps before you start to assemble.
- Do not tighten all screws/bolts until completely assembled.
- Keep all hardware parts out of reach of children.