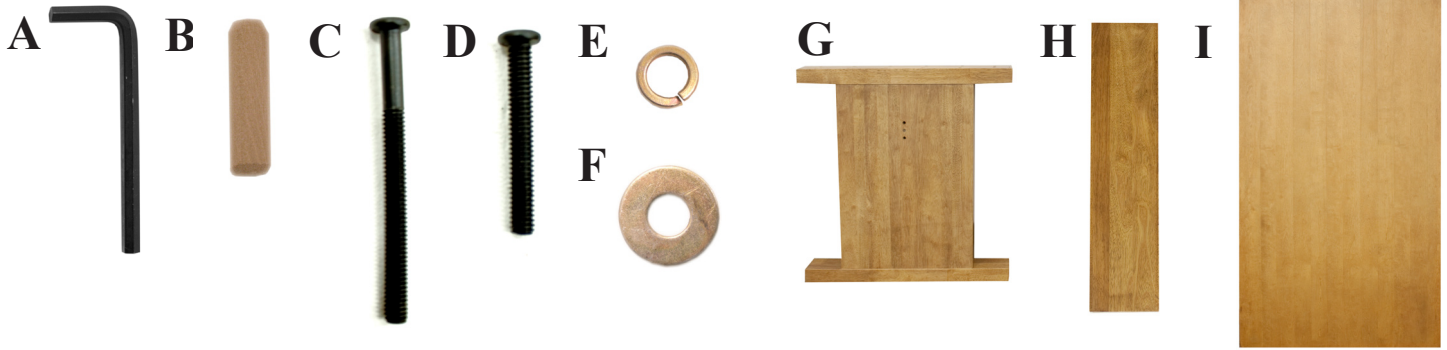


BCTRC7240, BCTRC6036 • INSTRUCTIONS

You will need 2 person(s) for this assembly.

Hardware: A: Assembly Key B: Dowel Rod(6) C: Long Bolt(4) D: Short Bolt(8) E: Locking Washer(8) F: Washer(8)

Parts: G: Leg(2) H: Stringer I: Table Top

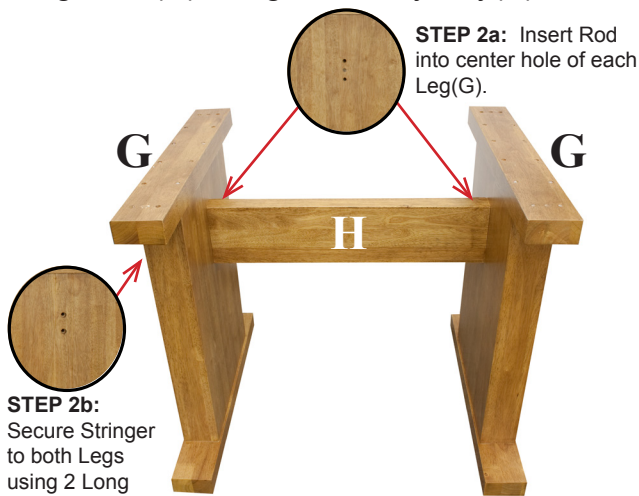


STEP 1 : Insert Rod(B) into each end of Stringer(H).



STEP 2a : Connect both Legs to Stringer(H) by inserting Rod into hole on each Leg(G).

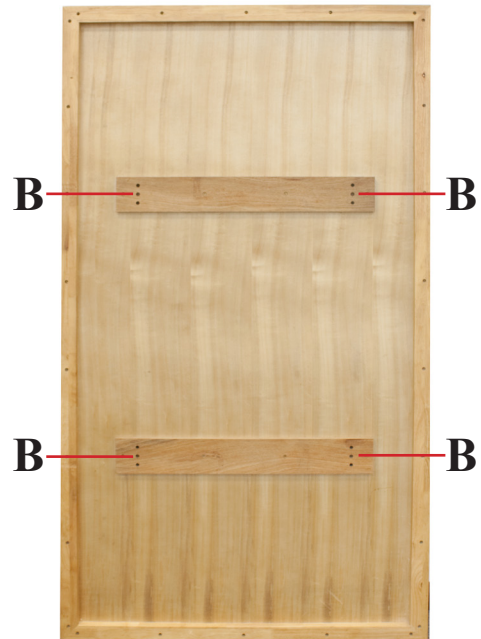
STEP 2b : Secure Stringer(H) to both Legs with 2 Long Bolts(C) using Assembly Key(A).



STEP 2a: Insert Rod into center hole of each Leg(G).

STEP 2b: Secure Stringer to both Legs using 2 Long Bolts(C) in each leg.

STEP 3 : Insert 4 Rods(B) into the bottom side of Table Top(I).

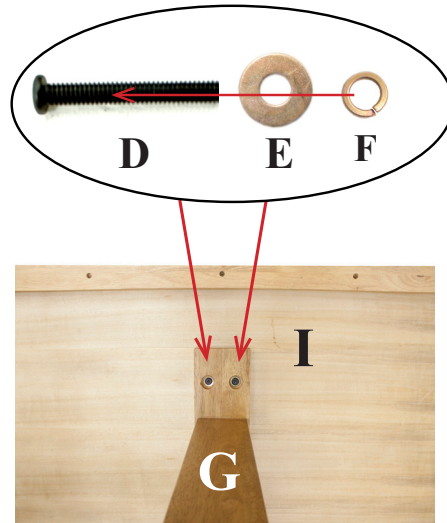


IMPORTANT NOTICE:

- Place all wooden parts on a clean and smooth surface such as a rug or carpet to avoid the parts from being scratched.
- Check to be sure that you have all parts and hardware.
- Remove all wrapping materials, including staples & packing straps before you start to assemble.
- Do not tighten all screws/bolts until completely assembled.
- Keep all hardware parts out of reach of children.

BCTRC7240, BCTRC6036 • INSTRUCTIONS
You will need 2 person(s) for this assembly.

STEP 4 : Insert Rods on bottom side of Table Top(I) into corresponding holes on top of Legs(G). Add Washer(F), then Locking Washer(E) to the eight remaining Short Bolts(D). Finish by securing Table Top to Legs with two Short Bolts(D,F,E) in each Leg Corner using Assembly Key(A).



IMPORTANT NOTICE:

- Place all wooden parts on a clean and smooth surface such as a rug or carpet to avoid the parts from being scratched.
- Check to be sure that you have all parts and hardware.
- Remove all wrapping materials, including staples & packing straps before you start to assemble.
- Do not tighten all screws/bolts until completely assembled.
- Keep all hardware parts out of reach of children.